

 **Defibrillator locations:**
 Basement - B-13D
 1st floor - Room 105 in cupboard
 Room 101 in cupboard
 near entrance door

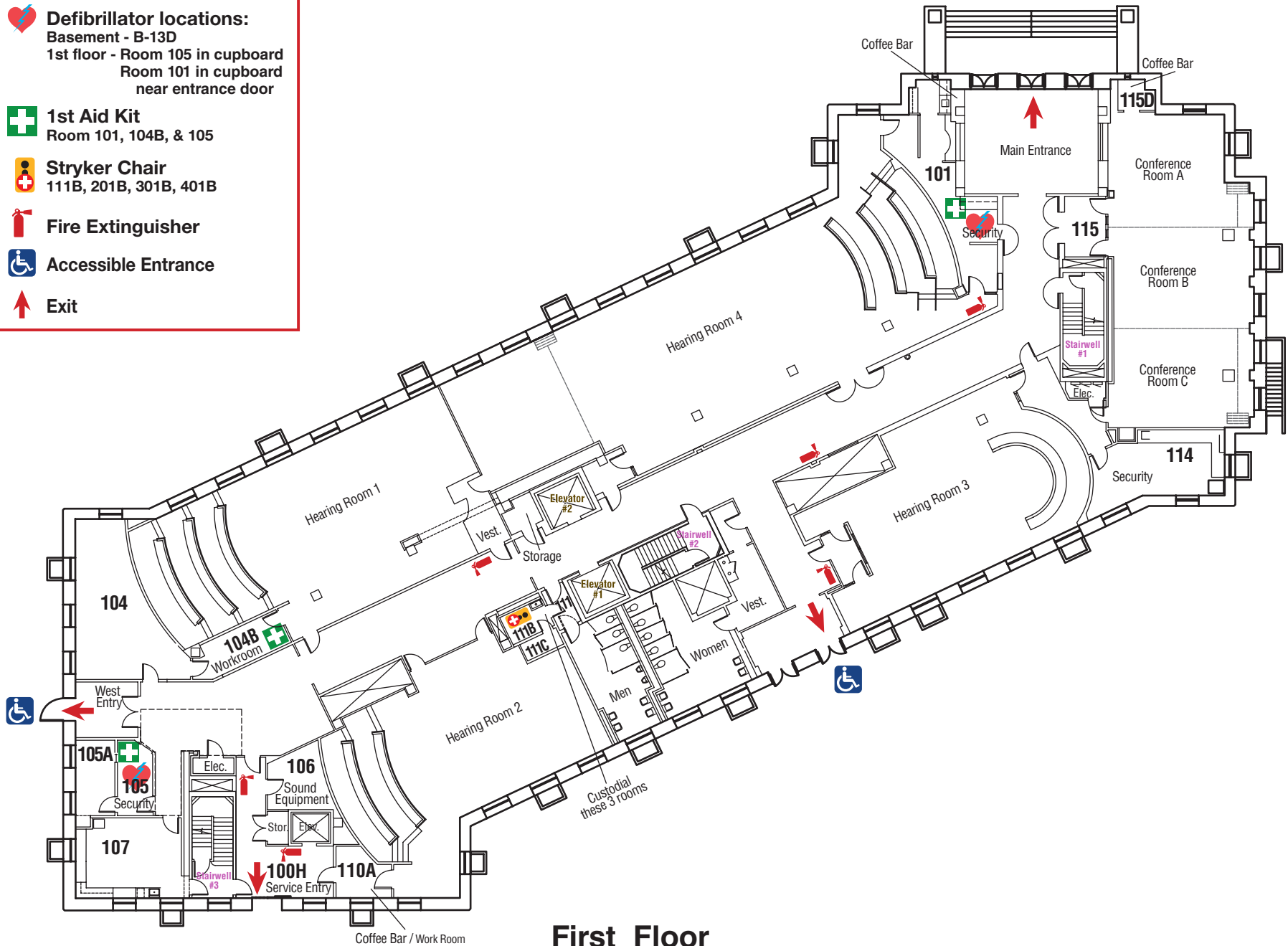
 **1st Aid Kit**
 Room 101, 104B, & 105

 **Stryker Chair**
 111B, 201B, 301B, 401B

 **Fire Extinguisher**

 **Accessible Entrance**

 **Exit**



First Floor
John A. Cherberg Building
 304 15th Avenue SW - Olympia WA 98504